

ENCHANTING WATERWAYS OF VENICE



TRIP OVERVIEW

Our five day cruise takes you into the iconic Italian city of Venice, to marvel at an otherworldly network of sea-fed canals lined with bobbing gondolas, tucked away osterie taverns serving the city's signature prosecco, museums flooded with vivid artistic treasures and marble landmarks crowned by elegant Byzantine domes.

ITINERARY & DETAILS

This document aims to give you all the information that you require for a smooth and comfortable trip to Venice. Please take the time to read this dossier to familiarise yourself with all the aspects of our river cruise. It includes important information such as flight details, visa requirements and travel insurance.

Your included meal guide:

B = Breakfast, **L** = Lunch, **D** = Dinner.

Day 1: UK to Venice **D**

Depart London on your scheduled flight to Venice. Upon arrival, you will be met and transferred to your ship, the MS Michelangelo. After meeting the crew and enjoying a welcome cocktail, unwind on board with an evening to do as you please.

Day 2: Burano and Murano **B/L/D**

Awake in a city like no other: a network of gondola-filled canals weaving between grand marble palaces and dramatic, historic monuments. This morning, enjoy a land excursion to the Doge's Palace, Venice's famed palace-turned-museum that overlooks the canal waters. Enjoy time at leisure to become acquainted with the city, perhaps enjoying a scoop of gelato in Piazza San Marco, the city's public square. Take an afternoon tour through the brightly-coloured streets of

the charming island of Burano then explore the outlying island chain of Murano, renowned for its beautiful glassware.

Day 3: Venice **B/L/D**

On this morning's tour, observe the quintessential Venetian process of crafting gondolas and creating the city's iconic masquerade masks, characterised by ornate designs and intricate gilding. Enjoy the afternoon at leisure, giving you the chance to take a gondola ride, view the spectacular Byzantine domes of Basilica di San Marco or stroll the city streets.

Day 4: Venice and Chioggia **B/L/D**

This morning, sail to Chioggia, a picturesque coastal town where pastel houses overlook a web of serene canals. In the afternoon, travel to Padua, a city brimming with medieval architecture. Take a guided tour of the town's sights, including the grand Basilica of Saint Anthony, one of the most frequently visited holy sites in the world. Head back to Venice for on board evening entertainment and a gala meal.

Day 5: Venice to UK **B**

After a leisurely breakfast, disembark the ship for your transfer to the airport and your scheduled flight back to the UK.

Meals

Breakfast, lunch and dinner daily are taken onboard the ship. Tables seat 6 people, so you'll be able to converse and socialise with new friends, whilst never feeling crowded together. Tea and coffee are available on board ship as well as unlimited soft drinks and alcoholic drinks, including a variety of wines and beer, both during meals and at the bar. (Premium brands are available at an extra cost).

Any dietary requirements and dislikes should be made known to our reservations staff at the time of booking.

On embarking the ship, you will be greeted by the captain, crew and staff and treated to welcome cocktails.

PLEASE NOTE:

Bookings made before August 2017 are cruise only and, unless you have chosen to upgrade your cruise to include excursions, do not include any of the excursions listed below:

- Morning tour of Venice and Doge's Palace
- Afternoon tour of the islands of Murano and Burano
- Morning tour of gondola and Venetian mask workshops
- Afternoon tour of Padua

The excursions listed above can be booked whilst on board for an additional fee, payable locally.

SHIP INFORMATION & ROUTE MAP

Ship information - 4★ MS Michelangelo

The 158 passenger 4★ MS Michelangelo is a charming vessel, ideal for taking in the breathtaking sights of northern Italy's unique waterways. The recently refurbished cabins are spaced across the Upper and Main decks and all are outside facing. Each cabin is located above the water affording outstanding outside views from the large picture windows.

Length: 110m long
Cabins 78 cabins

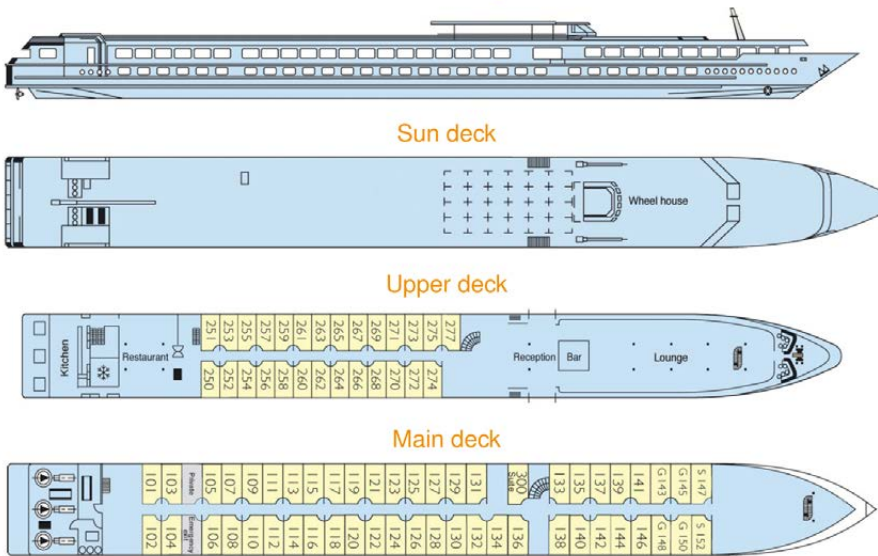
Width 11.40m wide
Passengers: 158 passengers

Facilities

- Lounge bar with a dance floor
- Bar
- Dining room
- WiFi (FREE in lounge bar and reception)
- Large sundeck
- Gift shop
- Heating/air-conditioning



MS Michelangelo



The Cabins

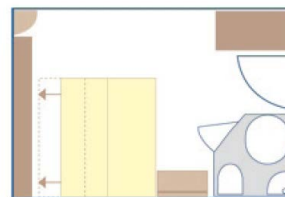
All cabins are equipped with shower and toilet, hairdryer, satellite TV, radio and safe.

Upper deck: 27 twins

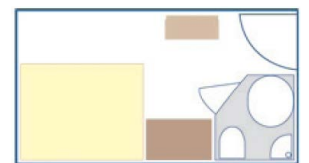
Main deck: 51 cabins (44 twins, 2 single cabins (S), 4 cabins with a double bed (G), 1 suite)

Final confirmation of your deck and cabin will be confirmed at booking. Please contact us if you have any queries.

Twin Cabin

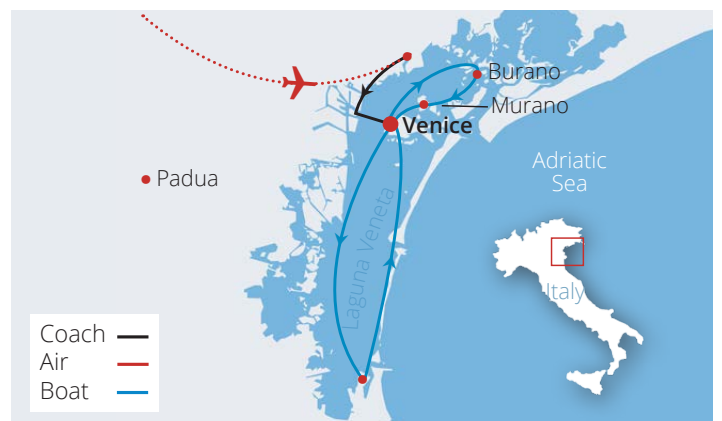
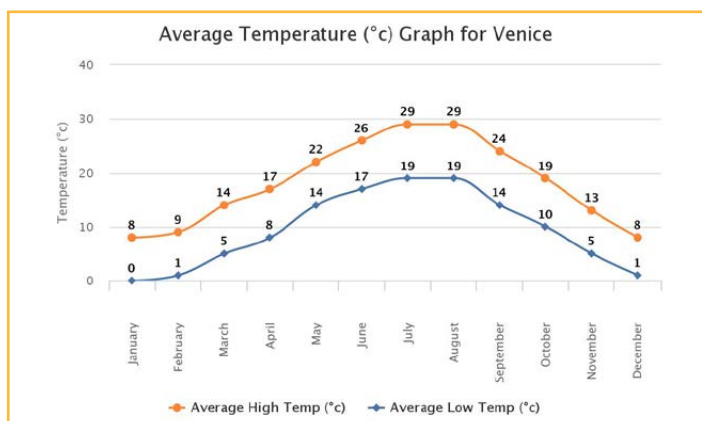


Double Cabin



WEATHER AND CLIMATE

Weather can vary quite considerably throughout the year, so please familiarise yourself with the climate charts below.



WHAT YOU NEED FOR YOUR TOUR

Visas

A visa is not required for British nationals travelling to Italy. Further advice should be sought from the applicable tourist authority for other nationalities and for general queries. We strongly advise you check your destinations' Tourist Board or Embassy for the most up-to-date guidelines regarding passport validity.

Tour Guides

Optional excursions are escorted by an experienced, English speaking guide.

Tipping

Tipping is at your discretion. There is an envelope in your cabin for these purpose that can be handed to reception at the end of your cruise.

Currency Exchange

The currency in Italy as well as on board is the Euro (€). We recommend that you exchange your currency before you leave the UK, however cash machines are available throughout Venice to withdraw money in the local currency.

Personal Expenses

This cruise is All-Inclusive, so you will only need to take a little extra money with you to cover any premium drinks on board and souvenirs, drinks and snacks purchased when off the ship, as well as any optional excursions you wish to book.

Credit Card Information

Credit cards are accepted on board ship and throughout Italy.

Electricity Supply

The electricity supply is 220V. You will need a European two pin round plug adapter in Italy.

Itinerary Changes

The Captain and CroisiEurope reserve the right to alter/modify an itinerary at any time, should safety or external circumstances make this necessary, changes are also subject to tides. Some of the highlights may only be seen on optional excursions at an additional cost, or by exploring independently.

DRESS CODE & WHAT TO PACK

Dress Code

There is no official dress code on board, however you'll be most comfortable during the day in smart casual clothing. You may wish to bring items that do not wrinkle easily as there is no iron provided on board ship. There are also no laundry facilities available. Bring a variety of clothing for the weather expected on your cruise, including light clothing and bathing suits for hot weather, a jumper or jacket for cooler weather and of course a raincoat and/or small umbrella.

FLIGHT INFORMATION

Your flight is to [Marco Polo International Airport, Venice](#) with [British Airways \(BA\)](#), departing from [London Gatwick South Terminal](#).

IMPORTANT: Please note that final flight details will be confirmed on your e-ticket and final documentation will be sent to you approximately 10 days before departure. Your final documentation will include transfer vouchers for your pre-organised return airport transfers and your river cruise boarding passes.

Baggage Allowance

Each passenger is entitled to 23kg of hold luggage plus 1 item of hand luggage not exceeding in size and 1 personal item such as a handbag, briefcase or laptop case. Weight restrictions will be finalized on E-ticket receipt. Should you wish to take additional luggage you will need to pay extra at check-in. Check-in should be at least 2 hours before departure.

Please Note:

For bookings made after 1 August 2017 or upgraded to include all excursions, you will receive excursion vouchers with your ticket package. In the unlikely event that your cruise does not operate, then you may be asked to change to a different date. A full refund will be made available, should the alternative dates offered be unsuitable.

ON YOUR ARRIVAL

On your arrival in Venice you will be met just after the Arrivals Hall at the "Lost and found office" by a representative from our local transfer agent, **Operations TOSITTI s.r.l.** The Sunspot Tours/ Operations TOSITTI s.r.l representative will show you to your transfer vehicle and escort, you to your boat. If you need to contact Operations TOSITTI s.r.l., during your stay the details are:

Health and Vaccinations

It is your responsibility to check any health and vaccination requirements applicable to your booked arrangements. We can only provide general information about this. Health and hygiene facilities and disease risks vary from country to country. You should take health advice about your own needs as early as possible and in good time before your departure. Sources of information include; www.fco.gov.uk, www.travelhealthpro.org.uk/, www.hpa.org.uk, your General Practitioner or a specialist clinic.

Physical Accessibility

This river cruise is accessible to most people with an average level of fitness and normal mobility. It involves moderate days of walking on cobble streets and getting on and off the cruise ship. This cruise is not suitable for anyone with walking difficulties.

Insurance

We strongly recommend that you and all members of your party are suitably insured as soon as you book your holiday. It is a condition of booking that you must have suitable travel insurance. It is important that you purchase travel insurance that suitably covers your participation in whatever activities you may undertake at the time that you make your booking. To assist you with this, we have arranged travel insurance in partnership with Holiday Extras. To arrange your travel insurance with Holiday Extras, please call **0800 781 4237** and quote **'WK830'** for preferential rates. Please ensure you provide us with the name of your insurer, policy number and their 24 hour emergency contact number as soon as possible. Sunspot Tours will not be liable for any costs incurred by you due to your failure to take out suitable travel insurance from the date of booking.

What to Pack

- Comfortable walking shoes such as trainers for sightseeing excursions
- Sun cream and a hat with a big brim for sunny days
- Sunglasses
- Ruck sack or light bag per person
- Personal toiletries
- Insect repellent
- Personal first aid kit containing travel pills, rehydration powder, plasters, stomach settlers, antiseptic creams, aspirin etc.

Airport Extras

If you wish to arrange airport car parking, lounges or accommodation at preferential rates, we recommend you book this in advance with Holiday Extra Tel. 0871 360 2000, quoting HX313.

Operations TOSITTI s.r.l.

Telephone: 00351 969 57 04 68

Emergency contact information

Please find below the **CroisiEurope** emergency contact details for the **MS Michelangelo**: 0033 6 02 03 52 67

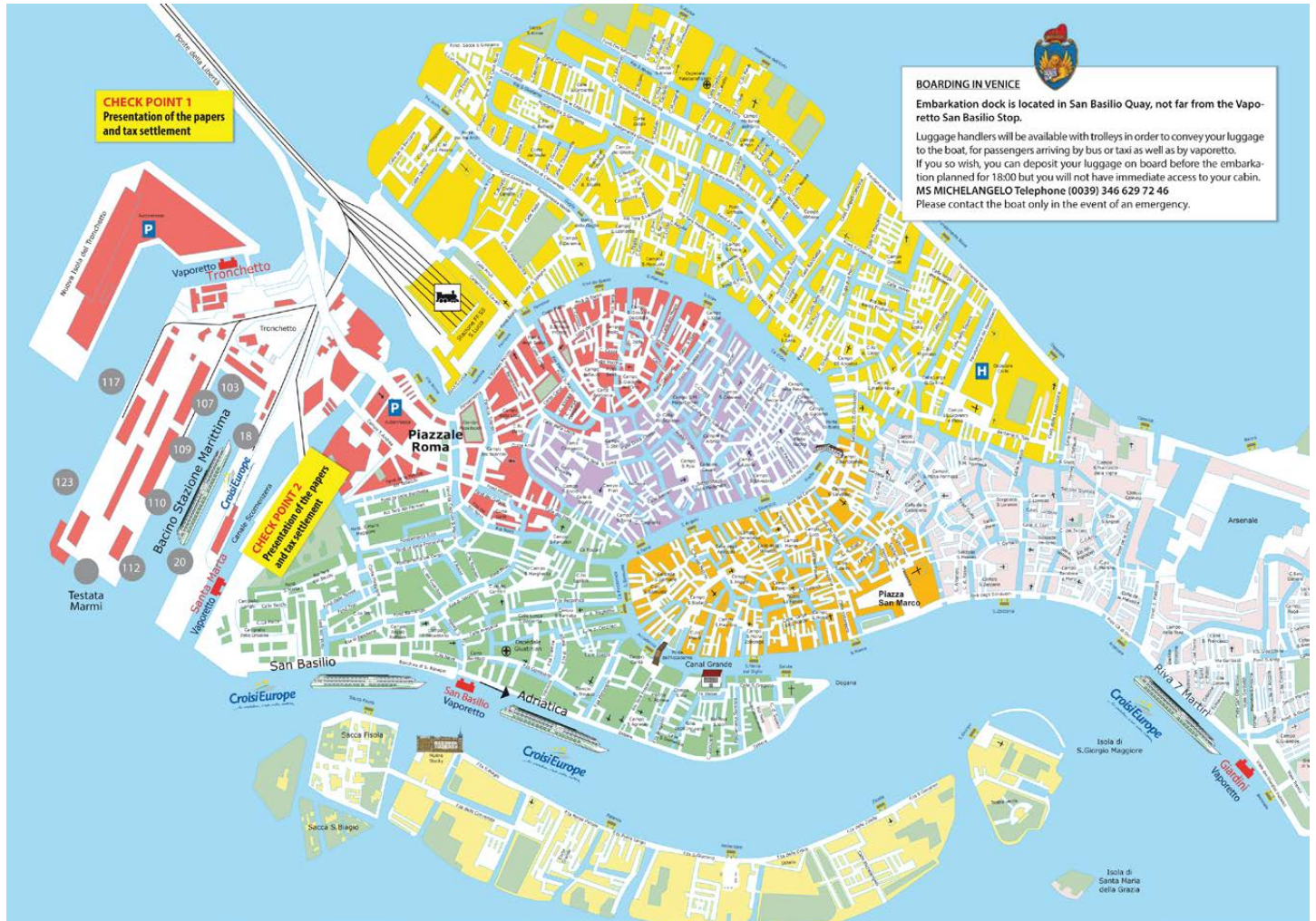
EMBARKING & DISEMBARKING

Embarkation Time: 6pm
Disembarkation Time: 9am

If your arrival is before this time, you will be transferred to the docking area where you will be able to leave your luggage. You are then free to explore the city at your own pace until it is time to board your ship. If your return flight is after 9am you will be able to leave your luggage onboard the ship and spend your time exploring the city until your return airport transfer.

BOARDING DETAILS

Please see below for details of your boarding quay. Your cruise company is **CroisiEurope**.



In the unlikely event that your cruise does not operate, then you may be asked to change to a different date. A full refund will be made available, should the alternative dates offered be unsuitable.